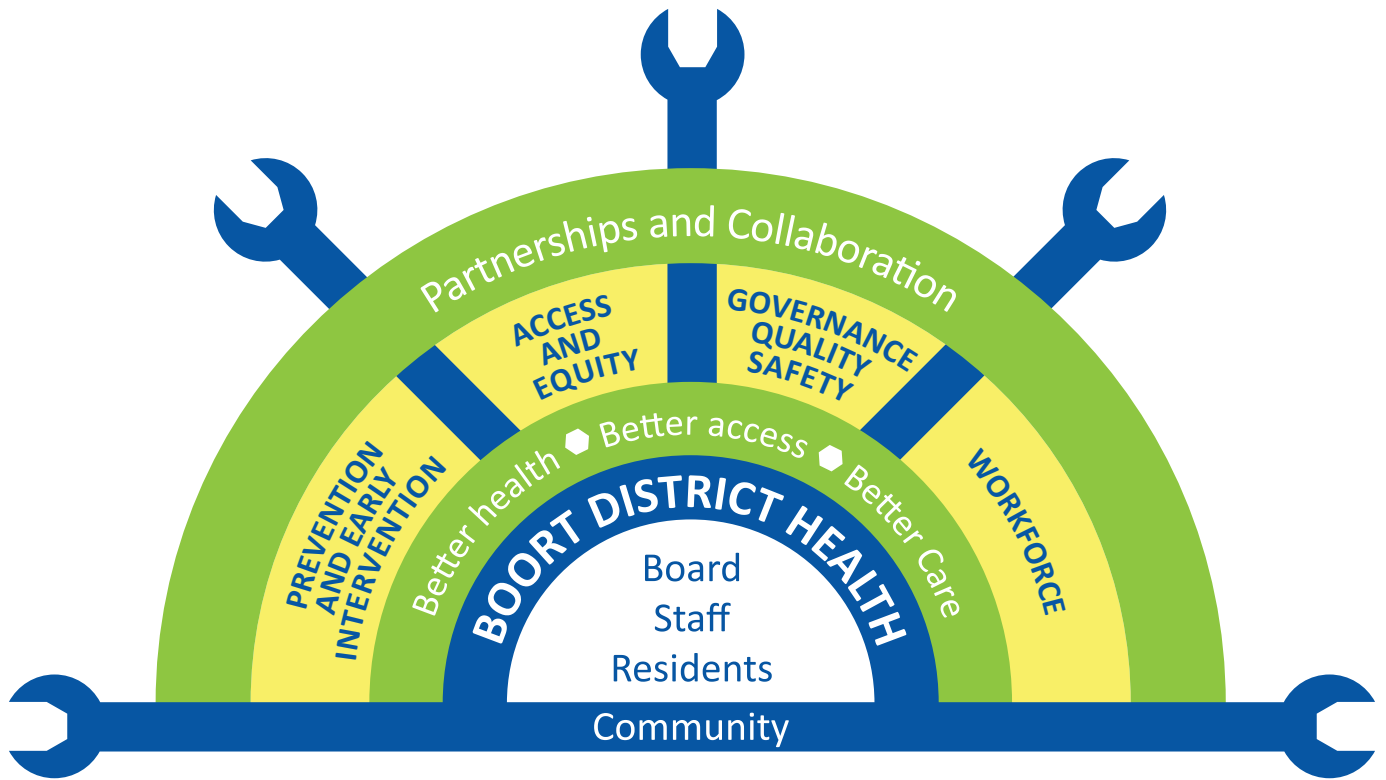


# STRATEGIC PLAN 2019-2022

*OUR HEALTHY FUTURE TOGETHER*



The Boort District Health Strategic Plan 2019-2022 has an overarching “Partnerships and Collaboration” approach. The four Strategic Directions underpin planning and action across the organisation and into the community. By developing new and strengthening current partnerships with government, community and other health system organisations Boort District Health can increase the opportunities for better health, better access and better care for the community it serves.

## FOUR STRATEGIC DIRECTIONS IDENTIFIED:

**PREVENTION  
AND EARLY  
INTERVENTION**

**ACCESS  
AND EQUITY**

**GOVERNANCE,  
QUALITY AND  
SAFETY**

**WORKFORCE**



## Vision

To improve and enrich the health and wellbeing of the Boort community and the surrounding districts

## Mission

To lead and collaborate in health initiatives that respond to the changing needs of our community including access to quality person centred health and care services, prevention and early intervention

## Values

### INTEGRITY

honesty, transparency and accountability

### RESPECT

dignity of the individual, rights and self-determination, fair, kind and considerate

### INCLUSIVITY

equality in the diversity of gender, culture, socio-economic status, spiritual beliefs

### COLLABORATIVE

working in partnership for better health outcomes

### EXCELLENCE

best practice and learning culture informed by evidence

## Strategic Directions

### PARTNERSHIPS AND COLLABORATION OVERARCHING

Prevention and Early Intervention

Access and Equity

Governance, Quality and Safety

Workforce



PREVENTION  
AND EARLY  
INTERVENTION

ACCESS  
AND EQUITY

GOVERNANCE,  
QUALITY AND  
SAFETY

WORKFORCE